

***Bombyx mori* nucleopolyhedrovirus *orf25* encodes a 30kDa late protein in the infection cycle**

Haiyan Wang, Keping Chen*, Zhongjian Guo, Qin Yao

(*Institute of Life Sciences, Jiangsu University, Zhenjiang 212013, China*)

Abstract: *Bombyx mori* nucleopolyhedrovirus (BmNPV) *orf25* gene was characterized for the first time. The coding sequence of *Bm25* was amplified and subcloned into the prokaryotic expression vector pGEX-4T-2 to produce glutathione S-transferase-tagged fusion protein in the BL21 (DE3) cells. The GST-Bm25 fusion protein was expressed efficiently after induction with IPTG. The purified fusion protein was used to immunize New Zealand white rabbits to prepare polyclonal antibody. Temporal expression analysis revealed a 30-kDa protein, which was detected beginning 24 hours post-infection using a polyclonal antibody against GST-Bm25 fusion protein. The transcript of *Bm25* was detected by RT-PCR at 18-72 h p.i. In conclusion, the available data suggest that *Bm25* encodes a 30kDa protein expressed in the late stage of infection cycle.

Keywords: BmNPV; *Bm25*; Expression temporal; RT-PCR; polyclonal antibody

CLC number: Q786 **Document code:** A **Article ID:** 0001-6209(2008)02-0247-05

1 Introduction

The family Baculoviridae is a large family of viruses that infect invertebrates, particularly insects of the order Lepidoptera. Baculoviruses contain circular double stranded DNA genomes of 80 to 180 kb^[1]. They are taxonomically subdivided into two genera, the nucleopolyhedrovirus (NPVs) and the granuloviruses (GVs) according to the morphology of occlusion bodies (OBs). The two viral forms are essential for the natural propagation of the baculoviruses. They have different viral structure compositions despite containing an identical genome^[2]. The *Bombyx mori* NPV (BmNPV) is a major pathogen of the mulberry silkworm and cause disastrous effect on output of *Bombyx mori* silk.

The BmNPV genome is 128413bp and potentially encodes 136 genes^[3]. So far, the functions of several genes in BmNPV have been characterized, such as *orf8*^[4], *orf60*^[5], *orf42*^[6], *orf79*^[7], *lef7*^[8], chitinase^[9], *vfgf*^[10] etc. But the functions of many other genes still remain elusive, including *orf25*.

BmNPV ORF25 (*Bm25*) is located at 24367-25014 nt in the genome of BmNPV T3 strain. It contains 648 nts and is predicted to encode a putative 215 amino acid peptide with a deduced molecular weight

of 24.8 kDa. It is transcribed in the opposite orientation to the polyhedrin gene. Though *Bm25* homologues are identified in several lepidoptera NPVs, it is uncertain whether *Bm25* and its homologues are functional genes.

In this study, we analysed the *Bm25* gene by examining transcription of the gene and expression of its protein product in BmNPV infected BmN-4 cells. RT-PCR analysis indicated that *Bm25* was transcribed at 18h p.i. and western blot analysis found that a 30 kDa product of *Bm25* was detected in BmNPV infected BmN-4 cells from 24 h p.i.. These results together indicated that *Bm25* was a late gene.

2 Materials and Methods

2.1 Cells and viruses

The *Bombyx mori* cell line, BmN-4 originated from ovary, was maintained in TC-100 medium (Gibco, Carlsbad) with 10% fetal bovine serum (Gibco). The BmNPV (Zhenjiang strain) was used for infections as wild type and propagated in BmN cells.

2.2 Computer-assisted sequence analysis

The data from all baculovirus genes in this paper were obtained from GenBank. The protein sequence was analysis using softwares of the ExPASy for the

prediction of motifs, domains, signal peptide, transmembrane regions.

2.3 Expression of Bm25 and generation of anti-Bm25 antiserum

Two primers, Bm25F (5'-Aggatcca TGACAAC-GGTTGCTG-3') with *Bam*HI site and Bm25R (5'-CctcgagCTCAAAGTCCATCAAT-3') with *Xho*I site (shown in bold) were designed to amplify the *Bm25* gene from the BmNPV T3 (GenBank accession No. NC 001962) genome. The *Bm25* coding region amplified was ligated into pGEM-T easy vector (Promega). The insert was retrieved by digestion with *Bam*HI and *Xho*I, and then subcloned into the expression vector pGEX-4T-2 (Amersham Pharmacia). This generated plasmid pGEX-GST-Bm25, in which *Bm25* is in-frame and fused with GST at the N terminus. The recombinant plasmid was transformed into *Escherichia coli* BL21 cells and fusion protein expression was induced by 1 mmol/L IPTG at 27°C when the optical density of the culture at 600 nm reached 0.5. The recombinant protein GST-Bm25 was purified using Glutathione Sepharose column (Amersham Pharmacia) and used to immunize rabbits to raise polyclonal antibodies.

New Zealand white rabbits received four injections of 200 µg of purified GST-Bm25 fusion protein. Antiserum was collected one week after the last injection. The polyclonal rabbit antibody against GST-Bm25 was used for immunoassay.

2.4 Transcription analysis of Bm25

BmN-4 cells were infected with BmNPV at a m.o.i of 10. Total RNA was isolated at 0, 3, 6, 12, 18, 24, 48 and 72 h p.i. using Trizol (Invitrogen) according to manufacturer's protocol. The RNA was dissolved in 25 µL water and quantified by absorbance measurement at 260 nm.

RT-PCR was performed using 1 µg total RNA as template for each time point. The total RNA was first treated with DNase to eliminate any potential genomic DNA contamination. First-strand cDNA was synthesized from total RNA by using 15-nt oligo(dT) primer and AMV reverse transcriptase (Promega) following the manufacturer's protocol. The cDNA mixtures were amplified by PCR using the gene-specific primer Bm25F and Bm25R. The PCR products were analyzed in 1.0% agarose gel.

2.5 Temporal expression of Bm25 in infected BmN-4 cells

For the time course analysis, BmN-4 cells were infected with BmNPV at m.o.i. of 10. Samples of total cell proteins were harvested from infected cells at 0, 3, 6, 12, 18, 24, 48, 72 h p.i. and washed three times with PBS. The protein concentrations of the cell extracts were determined by Bradford's method. Protein sam-

ples (20 µg) were separated by 10% SDS-PAGE and subsequently subjected to western blot assay.

Following SDS-PAGE electrophoresis, the protein samples were transferred onto a PVDF membrane by wet electrophoresis transfer with Trans-Blot Cell (Bio-Rad). The membrane was blocked with 4% skim milk powder in PBST for 3 h followed by incubation with the anti-Bm25 polyclonal antiserum diluted 1:5000 for 2 h at room temperature. After washing, the membrane was incubated with a goat anti-rabbit IgG conjugated to HRP diluted 1:5000 for 1 h at room temperature. The peroxidase activity was developed with 0.1% H₂O₂ and diaminobenzidine (DAB) as a chromogenic substrate.

3 Results

3.1 Sequence analysis of Bm25

The Bm25 ORF contains 648 nts and is predicted to encode a 215-amino acid peptide with a predicted molecular weight of 24.8 kDa. A baculovirus consensus late transcriptional start motif ATAAG was found at 146 nt upstream of the start codon ATG (Fig. 1, shown in bold). The canonical poly (A) signal (AATAAA) was not found at the downstream region of the translational stop codon (TAA). Nine putative phosphorylation sites were found in the putative Bm25 protein including three serine phosphorylation sites (aa30, aa98 and aa200), three threonine phosphorylation sites (aa25, aa139 and aa201), and three tyrosine phosphorylation sites (aa104, aa147 and aa209). No signal peptide, transmembrane regions, mitochondrial targeting sequences or membrane retention signals were found by any of the motif search engines employed.

Searches of protein databases, GenBank and SWISS-PROT, revealed that the deduced Bm25 protein was homologous to the putative products from 6 NPV ORFs. The BmNPV *orf25* shared an identity of 100% with AcMNPV *orf34*. The homologs from the other 5 NPVs shared 29%–35% identity with *Bm25* (data not shown).

3.2 Expression of the Bm25 gene in E.coli

The open reading frame encoding Bm25 protein was amplified from BmNPV T3 genomic using PCR. *Bam*HI and *Xho*I sites were designed in the primers to facilitate cloning into the pGEX-4T-2 vector. The 648 bp PCR products were cloned into the pGEX-4T-2 vector (Fig. 2).

The recombinant plasmid pGEX-GST-Bm25 was transformed into *E. coli* BL21 and fusion protein expression was induced by incubation in the presence of 1 mmol/L IPTG. Western blot analysis using the anti-GST monoclonal antibody further confirmed that the 45 kDa polypeptide was the GST-Bm25 fusion protein (Fig. 3). The fusion protein was purified and used to immunize rabbits for producing the anti-Bm25 antiserum.

3.3 Transcriptional analysis

Temporal regulation of *Bm25* transcript was examined by RT-PCR analysis using total RNA isolated from BmNPVinfected host cells at designated time

intervals (0, 3, 6, 12, 18, 24, 48 and 72 h p.i.). The result revealed a band with an expected size of 648 bp (Fig.4). The *Bm25* transcript was detected at 18 h p.i. and remained detectable until 72 h p.i.

```

25173 CCGCAAAGATAAGTCTTTGTTGATCTACGGGCACAOCTTCTTTATCGGCAATTTTTTGTCT -101
25113 TGAGATCGGCCACCCTCTCTGCGGGTTCCGTTTCGGCGGTAATGGTTTTGCCCCTCAATG -40
25053 TTTTGATGAATATTTGCATTTTTACACTATTACTTATAAAATGACAACGGTTGCTGTGAAT 21
                                     M T T V A V N 7
24993 GTGCCCTTGCCCTCCACCAGATGGTGGAAATGTGCAACAGGCGGCCGATACCCACACCACGA 81
                                     V P L P P P M V E L C N R R P I P T P R 27
24993 ATTATTTCCCTTCAACGGCAATTTGATTTCACGCCCATAATCAAAAATTATCAGGCCGAC 141
                                     I I S L Q R Q L I S T P V I K N Y Q A D 47
24873 GTGCAAGAACCGATAGATGCTTTCAAACGACTTAATATAACACCGGGCCACTTGGGCGGAG 201
                                     V Q E A I D A F K R L N I T P G H L G E 67
24813 GTGATCGATGCAATGGGGCAACCAAGGCAGACTGTGCGAGAAATTATAGAAGCTGACGAC 261
                                     V I D A M G Q Q G R L L P E I I E A D D 87
24753 GATTTTAAAGTGAATCAACGCGCAATCTCAGCTGCAAAAAGCTGCGAATATCTGAATTTT 321
                                     D F K V N Q T R N L S C K T V E Y L N F 107
24693 TTGGAAAACGATAAATGTTTCGCTGTGGACTTTGTTACACGCAACGCGAATTGGCTGTGG 381
                                     L E N D K L F R C R L C Y T H A D W L W 127
24633 TGTGATTTTACCGAAACCACGGCTATCGGGGCACACGGACATAGCATGCAACAACACTAC 441
                                     C D F H R N H A Y R G T R D I A C N N Y 147
24573 GTCGAGCATTAAACAGCGATATGGGTGATGTCATGCTTGTGGAAGAATACTTTTACTGT 501
                                     V E H L N S D M G V V M L V E E Y F Y C 167
24513 CTGTCGTCGTGTAATTTTAAACAAGATGCCAAACTTGGCGCTGCAAAACGCTCACAACCTTC 561
                                     L S S C N F K Q D A K L A L Q T L T N F 187
24453 GAGTCGCTATCCGATCTAATGGCAAGCTACAACCTTTTCAACGCCCGAOCCTGGACACAAAC 621
                                     E S L S D L M A S Y N F S T P D L D T N 207
24393 GCATACGAATTGATGGACTTTGAGTAAAATAACATGTCGACGTTAATAGTTATCTGATCA 681
                                     A Y E L M D F E - 215
    
```

Fig.1 Nucleotide sequence and deduced amino acid sequence of *Bm25*. A baculovirus consensus late transcriptional start motif ATAAG is shown in bold. The primers used in this study are underlined. The putative threonine, tyrosine, and serine phosphorylation sites are shown in Grey Shading.

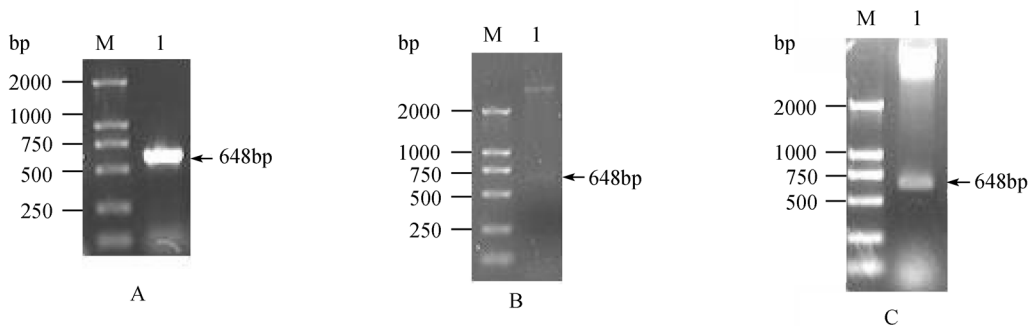


Fig.2 The PCR product of *Bm25* amplification, recombinant pGEM-T easy vector and pGEX-4T-2-Bm25 vector identified by enzyme cleavage. A: the PCR product of *Bm25* amplification; B: recombinant pGEM-T easy vector was identified by *BamH I* and *Xho I* enzymes; C: pGEX-4T-2-Bm25 was identified by *BamH I* and *Xho I* enzymes.

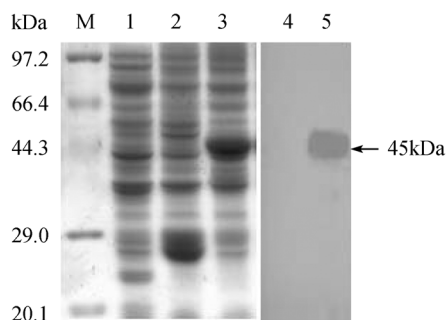


Fig.3 The expression of GST-Bm25 in *E. coli* cells and Western blotting analysis. M: protein marker.1: BL21 cell extracts; 2: proteins of BL21 transformed with pGEX-4T-2; 3: the extracts of BL21 transformed with pGEX-4T-2-Bm25; 4: Western blotting analysis using anti-GST monoclonal antibody for BL21; 5: Western blotting analysis using anti-GST monoclonal antibody for BL21 transformed with pGEX-4T-2-Bm25.

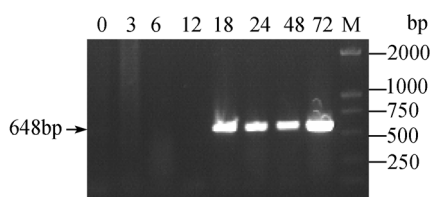


Fig.4 Transcriptional analysis of *Bm25*. Total RNA was isolated from BmNPV-infected cells at 0, 3, 6, 12, 18, 24, 48, 72 h p.i. RT-PCR was used to analyse *Bm25* transcription in each sample. A 648bp band was observed in 18, 24, 48, 72 h p.i. sample respectively.

3.4 Time course of *Bm25* expression in BmNPV-infected cells

A time course of BmNPV infected BmN-4 cells were analyzed by western blot using the polyclonal antibody against Bm25. The result revealed that a specific immunoreactive band with approximately 30 kDa, which first detected at 24 h.p.i. and could be detected until 72 h.p.i. (Fig.5). The 30 kDa immunoreactive band was not consistent with predicted molecular weight 24.8 kDa, suggesting that the post translational modification of the Bm25 protein occurred.

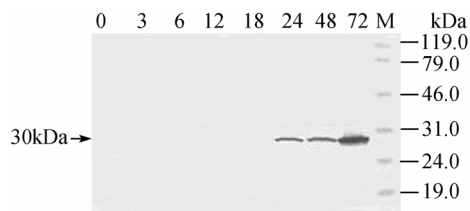


Fig.5 Western blot analysis of *Bm25* gene product in BmN-4 cells. The cells were collected at 0, 3, 6, 12, 18, 24, 48, 72 h p.i. and 20 μ g cell lysates at each interval was subjected to Western blot analysis using anti-GST-Bm25 serum. The binding was developed with diaminobenzidine (DAB) as a chromogenic substrate. Protein markers are indicated on the right.

4 Discussion

During the last decade, 29 baculovirus genomes have been sequenced offering a wealth of information on the gene content and phylogeny of the baculovirus genomes^[11]. Based on the phylogenetic analysis, 63 genes were conserved among all sequenced lepidopteran NPVs^[12]. In this study, we described some preliminary characteristic of *Bm25*, a gene that has thus far not been characterized. The search for homologues of *Bm25* revealed that homologues were present in 6 completely sequenced members of lepidopteran NPVs, suggesting *Bm25* and its homologues were specific genes for 7 completely sequenced lepidopteran NPVs and might play important role in function related to these hosts.

In order to study the expression of the Bm25 protein and its possible function, a polyclonal antibody was prepared by immunization of rabbits with a purified GST-Bm25 fusion protein. Immunodetection of Bm25 protein in infected cells was performed using the polyclonal antibody against Bm25. A specific immunoreactive band of approximately 30 kDa was first observed at 24 h p.i. and remained detectable up to 72 h p.i. This was consistent with the transcriptional analysis of the *Bm25* gene, however, the protein was detectable 6 hours later than the gene transcript, was probably due to the low amount of protein produced shortly after transcription. This result suggested that *Bm25* might be a late gene and probably used only one late transcription start motif, ATAAG, found 146nt upstream of the translation start codon ATG of *Bm25*. We observed that the size of the immuno-reactive protein was larger than the predicted molecular weight of 24.8 kDa, suggesting that the post-translational modification might have occurred. This result was also agreement with the presence of nine potential phosphorylation sites, which were found in the putative Bm25 protein.

Although some basic characteristics were described in this paper, much information about this gene keeps unknown. The function of *Bm25* is being further investigated by knockout mutants of *Bm25*.

REFERENCES

- [1] Lu M, Swevers L, Iatrou K. The p95 gene of *Bombyx mori* nuclear polyhedrosis virus: temporal expression and functional properties. *J Virol*, 1998, 72(6): 4789-4797.
- [2] Baluchamy S, Gopinathan KP. Characterization of a cyclin homolog from *Bombyx mori* nucleopolyhedrovirus. *Virus Res*, 2005, 108(1-2): 69-81.
- [3] Gomi S, Majima K, Maeda S. Sequence analysis of the genome of *Bombyx mori* nucleopolyhedrovirus. *J Gen Virol*, 1999, 80(5): 1323-1337.
- [4] Imai N, Kurihara M, Matsumoto S, et al. *Bombyx mori* nucleopolyhedrovirus orf8 encodes a nucleic acid binding protein

- that colocalizes with IE1 during infection. *Arch Virol*, 2004, 149(8): 1581–1594.
- [5] Du MF, Yin XM, Guo ZJ, *et al.* Characterization of a late gene, ORF60 from *Bombyx mori* nucleopolyhedrovirus. *J Biochem Mol Biol*, 2006, 39(6): 737–742.
- [6] Acharya A, Gopinathan K. Transcriptional analysis and preliminary characterization of ORF Bm42 from *Bombyx mori* nucleopolyhedrovirus. *Virology*, 2002, 299(2): 213–224.
- [7] Xu HJ, Yang ZN, Wang F, *et al.* *Bombyx mori* nucleopolyhedrovirus ORF79 encodes a 28-kDa structural protein of the ODV envelope. *Arch Virol*, 2006, 151(4): 681–695.
- [8] Wang F, Yang LR, Tang XD, *et al.* The translational and transcriptional initiation sites of BmNPV *lef-7* gene. *Virus Genes*, 2006, 33(3): 351–357.
- [9] Daimon T, Katsuma S, Shimada T. Mutational analysis of active site residues of chitinase from *Bombyx mori* nucleopolyhedrovirus. *Virus Res*, 2007, 124(1-2): 168–175.
- [10] Katsuma S, Horie S, Daimon T, *et al.* In vivo and in vitro analysis of a *Bombyx mori* nucleopolyhedrovirus mutant lacking functional *vfgf*. *Virology*, 2006, 355(1): 62–70.
- [11] Jehle JA, Blissard GW, Bonning BC, *et al.* On the classification and nomenclature of baculoviruses: a proposal for revision. *Arch Virol*, 2006, 151(7): 1257–1266.
- [12] Herniou EA, Luque T, Chen X, *et al.* Use of whole genome sequence data to infer baculovirus phylogeny. *J Virol*, 2001, 75(17): 8117–8126.

家蚕核型多角体病毒 *orf25* 基因在病毒感染过程中编码一个 30kDa 的晚期蛋白

王海燕, 陈克平*, 郭忠建, 姚勤

(江苏大学生命科学研究院 镇江 212013)

摘要: 首次对家蚕核型多角体 *orf25* 基因进行了描述。扩增 Bm25 基因, 亚克隆到原核表达载体 pGEX-4T-2, 在大肠杆菌 BL21 (DE3) 中表达含有 GST 标签的融合蛋白。IPTG 诱导后高效表达 GST-Bm25 融合蛋白。纯化的融合蛋白免疫新西兰大白兔制备多克隆抗体。利用制备的抗 GST-Bm25 融合蛋白的多克隆抗体进行表达时相分析显示: 24 h p.i. 检测到 30 kDa 的蛋白条带。RT-PCR 方法, 在 18-72 h p.i. 检测到 *Bm25* 基因的转录本。结论: 以上数据表明 Bm25 基因编码一晚期表达的 30kDa 蛋白。

关键词: BmNPV; *Bm25*; 表达时相; RT-PCR; 多克隆抗体

中图分类号: Q786 文献标识码: A 文章编号: 0001-6209(2008) 02-0251-05

基金项目: 国家自然科学基金(30370773); 国家“973 项目”(2005CB121000)

*通讯作者。Tel/Fax: +86-511-88791923; E-mail: kpchen@ujc.edu.cn

作者简介: 王海燕 (1982-), 山东聊城人, 硕士, 主要从事病毒分子生物学。E-mail: wanghaiyan2007@163.com

收稿日期: 2007-07-09; 修回日期: 2007-08-20

答 作 者 问

问: 我想尽早得到审稿结果, 或者提前发表, 有没有好的办法能使审稿老师快点。比如我们增加审稿费等方法?

答: 在发给作者的“收稿通知”中, 编辑部已经告知了我刊处理稿件的程序和大致时间进度。在作者向我刊投稿之前, 应详细了解我刊的规定。审稿人评审一篇文章, 并给出谨慎的评审意见是需要一定时间的。所以, 作者在投稿之前应该留出足够多的时间给编辑部, 以便于编辑部进行评审, 我们的承诺是在 2 个月之内给予答复, 6~10 个月之内刊出。如要求提前发表, 请在投稿的同时提出书面报告, 说明该研究成果的重要性、创新性、竞争性和提前发表的必要性, 经过我刊编委会讨论并通过后, 可予提前刊出, 无需另加费用。